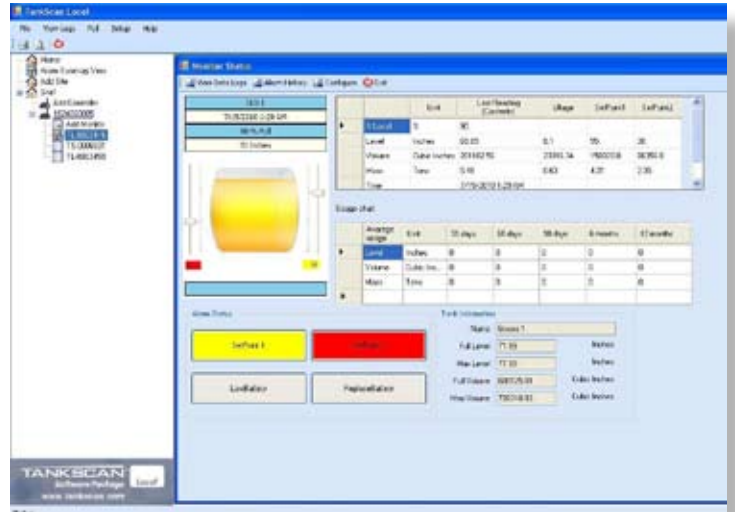


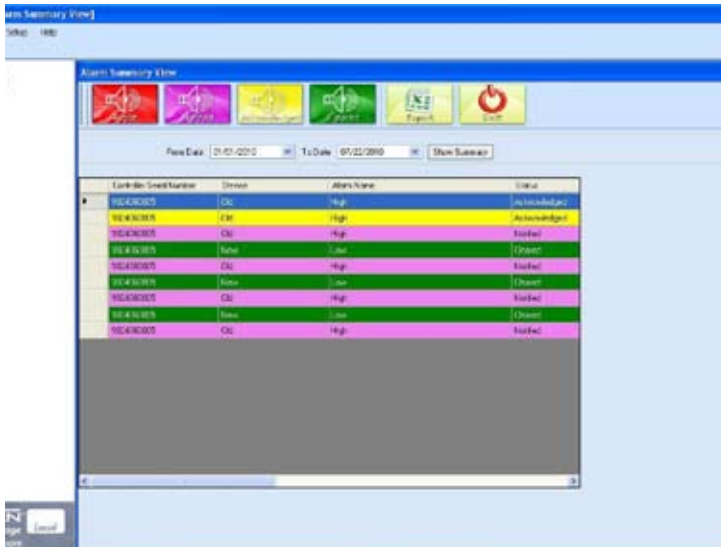


TankScan Local

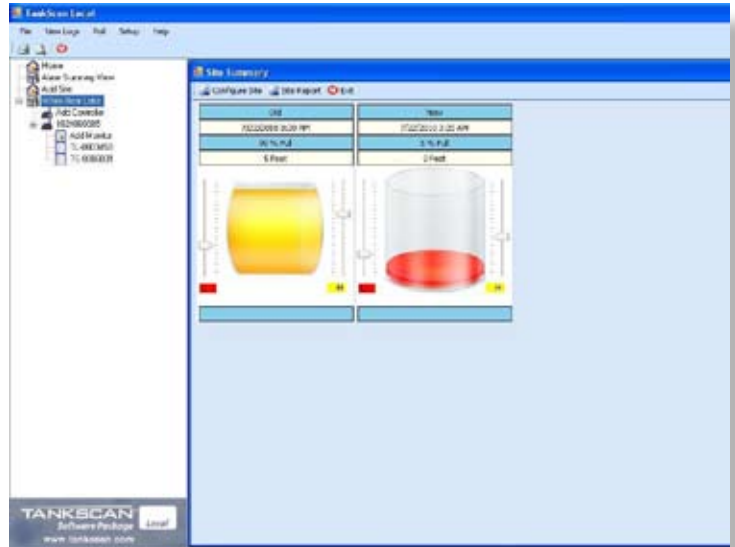
TankScan Local software is installed on a single site PC and receives tank level measurements directly from the USB port of the controller. It's an easy to use, Microsoft Windows® based package allowing you to configure items such as set points, alarms, and tank size, as well as view, graph, and print data history. TankScan Local only allows data access on one PC, but eliminates all costs associated with call charges and access fees.



The software allows user to view tank levels, alarm status, and usage trends on one screen.



Check notifications and export data if needed.



View site summary and configure new sites easily.